

LONDON MUSEUM

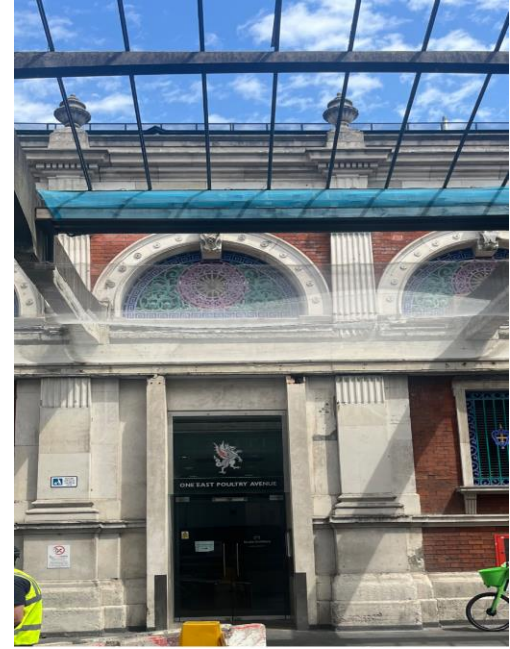
GETTING TO KNOW THE STUDIOS



A visual story



This is the entrance door to London Museum Studios, at **1 East Poultry Avenue.**

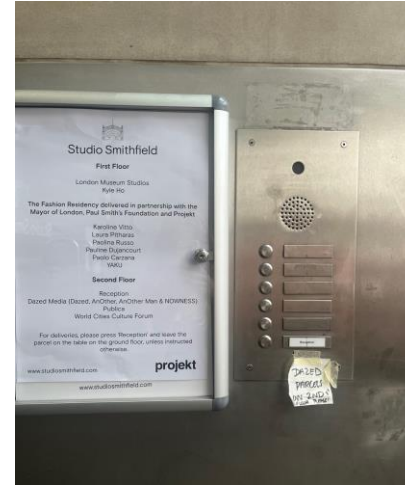


This can be a busy road with construction work happening nearby, and with cars passing through.

Entering the Building



There may be a 'Studio Smithfield' sign outside the door. A member of our team will meet you at this point.



When the sign is not there, please buzz 'Reception' mentioning you are here for the London Museum Studios. Then, pull the **right side door**.

Entrance Lobby



You will see the stairs on your left and the lift on your right.

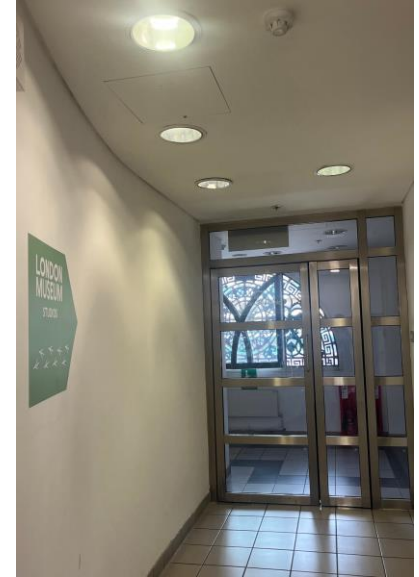
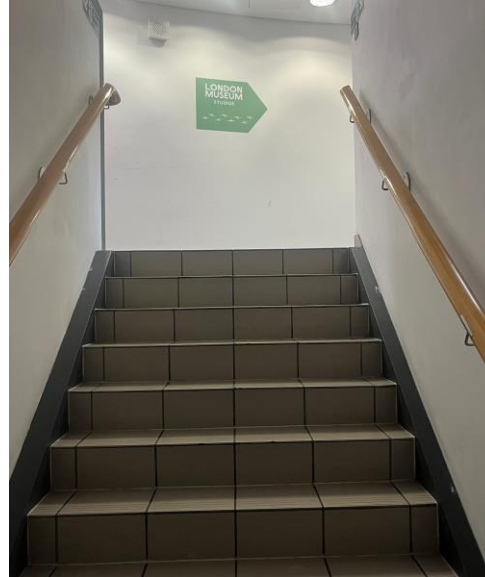
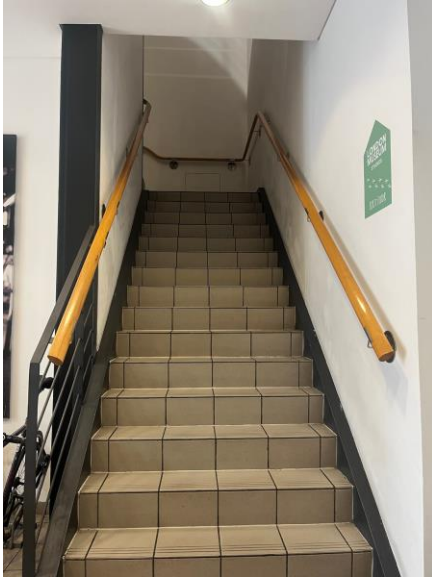
There may be bikes and/or packages in the entrance lobby.

Getting here: Lifts



Take the lifts to Floor 1.

Getting here: Stairs

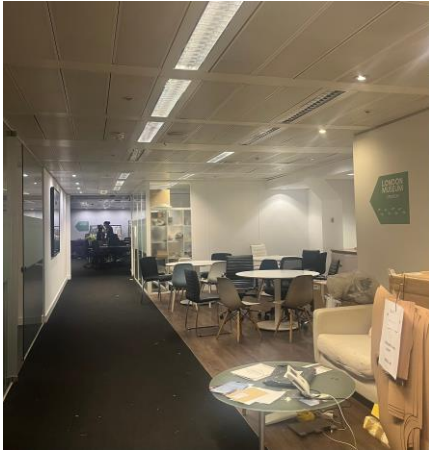


You can also follow the stairs (and green signs) to Floor 1.



Head through the black door.

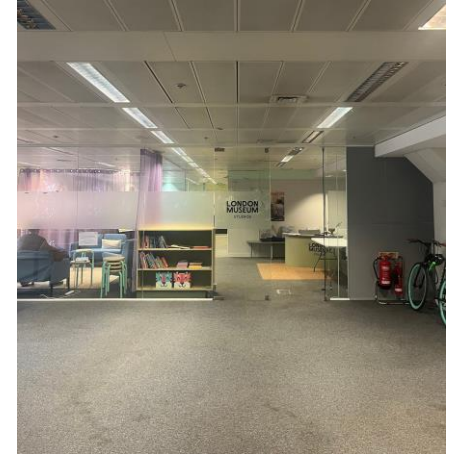
Right to the End of the Corridor



Walk past the space of our building neighbours, the Paul Smith Foundation.



Still following the green signs, walk through the glass door on the left.



And continue straight through to London Museum Studios!

WHAT TO EXPECT

- We have multiple rooms, and a quiet room too. When you enter, you'll find the front desk and a lounging area.
- There will be a sign in point at the front desk, please make sure to sign in there. You are also free to have refreshments such as tea or coffee and we often have snacks on hand!
- Paul Smith's Foundation is adjacent our studio spaces, so you may see others not from the London Museum Studios.
- Though they are most often not too loud, construction sounds or traffic may be audible throughout the day, especially when the windows are open.
- There are two kitchen spaces where food may be prepared and so you can also expect that you may smell cooked meals from time to time.



THE TEAM

The London Museum Studios will have staff and volunteers available on site for you to meet and talk to. Our volunteers will be wearing grey London Museum uniforms and members of staff can be identified by their lanyards.



Evacuation - In the event of an emergency



In the case that you need to exit the building, please exit quickly and safely through your nearest fire exit.

There are fire exit signs and you will also be guided on where to go. Please be sure not to use the lifts.

Front Room



Middle Room



Back Room

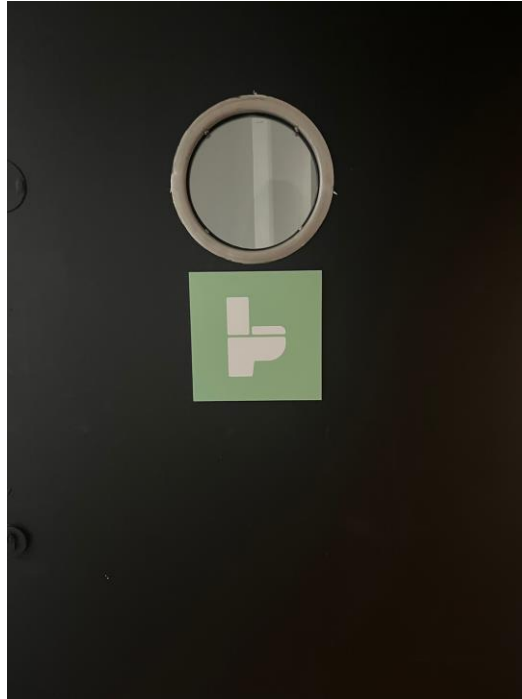


Pictured here, showcasing the exhibition *Second Nature*.

Kitchen



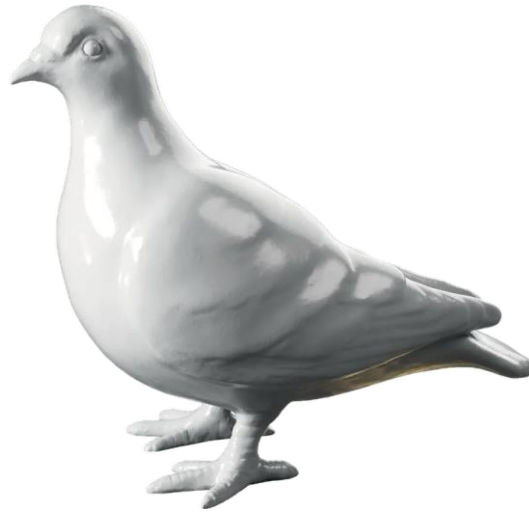
Toilets



These are gender neutral toilets.

Quiet Room





We look forward to meeting you!
If you have any questions regarding the London
Museum Studios or your visit, please email us at
londonmuseumstudios@londonmuseum.org.uk

londonmuseum.org

